

# SMALL CELL BRACKET

ONLY FITS  
NOKIA EQUIPMENT



## SMALL CELL BRACKET

is designed for installation of one NSN Small Cell unit on wall or vertical structures.

## FLEXIBILITY

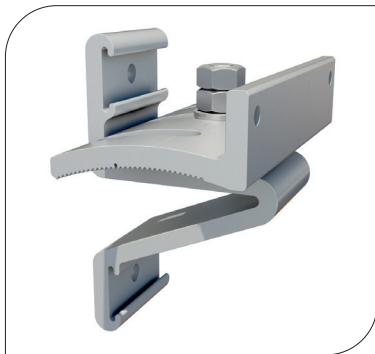
The Small Cell Bracket allows the Small Cell unit to be tilted up to 15 degrees and panned up to 30 degrees. The bracket is prepared to be mounted to a wide range of vertical structures by using hose clamps. Together with the Chain Bracket Small Cell Holder it can be mounted on the Cue Dee Chain Bracket system.

## QUALITY

All components are made of anodized aluminium or acid proof stainless steel which gives the support excellent corrosion resistance.

## EASY ASSEMBLY

Installation is very easy thanks to its flexible design and the cup head square neck bolt which gives you a free hand when tightening the bolts.



## ORDER AND TECHNICAL INFORMATION

DRAWING NO:	CD 991048			
FUNCTION DESCRIPTION:	Small Cell Bracket for installation of one NSN Small Cell unit on wall or vertical structures.			
MECHANICAL DATA				
Profiles:	Aluminium, nature anodized 20µm			
Fasteners:	Acid proof stainless steel			
PACKAGE DIMENSIONS	LENGTH	WIDTH	HEIGHT	WEIGHT
	145 mm (5,7 in)	105 mm (4,1 in)	85 mm (3,3 in)	0,8 kg (1,76 lb)
ACCESSORIES				
	Chain Bracket Small Cell Holder			

Quality Design